

TALTUL

A Needlepoint Brooch

A design by Orna Willis



To my little niece Tal

TALTUL

A Needlepoint Jewel

For the needlepoint piece you will need:

- Tapestry needles (#22-24), a beading and sewing needle
- 8" x 8" stretcher bars
- 8" x 8" 18 - mono brown canvas
- 3" x 3" piece of UltraSuede® for backing in coordinating color
- Sewing thread in coordinating color

- The following fibers, (1 of each) and beads:

Thread #1 Kreinik #12 Braid 029

Thread #2 Access Commodities Trebizond TRA 736

Thread #3 Access Commodities Trebizond TRA 495

Thread #4 Access Commodities Trebizond TRA 393

Thread #5 Access Commodities Trebizond TRA 695

Thread #6 Rainbow Gallery Neon Rays N86

Mill Hill Magnifica 11002

For the jewelry embellishing you will need:

- 8 pieces of 4" 22 gauge bronze wire
- 5" of Gold-Filled chain of your choice or any other material for neck piece.
- 8 X 8mm faceted cube crystal beads in Turquoise color
- 16 x 4mm Czech fire-polish round faceted beads in Olivine
- 8 x 5.5x3.5Mm button freshwater pearls in light teal
- 24 Mill Hill Glass Seed Beads #00557
- 8 gold-colored jump rings
- Flat nose jewelry pliers
- Round nose jewelry pliers

For Pin: Pin backing piece

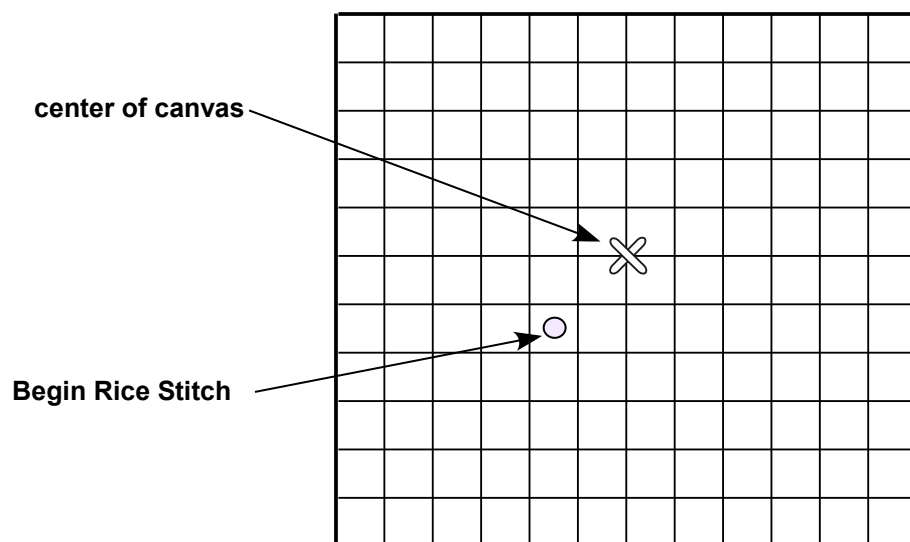
For Necklace: 2 gold-colored jump rings and necklace or ribbon.

IMPORTANT: The colors on the Master Chart are not indicative of your fiber colors. They are there to help you follow the instructions.

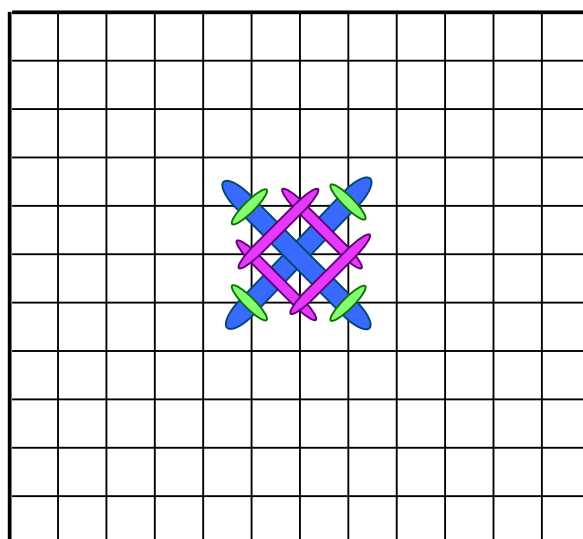
Reproduction in whole or any part of all written material, including sketches and charts in "Ornaments - designs by Orna" kits is strictly forbidden unless prior consent of "Ornaments- designs by Orna" has been given in writing.
"Ornaments - designs by Orna" kits may not be stitched for resale.

STITCHING INSTRUCTIONS

1. Attach your canvas to the stretcher bars. Find the center of your canvas and count down, as shown in the diagram below, to begin the Rice Stitch.

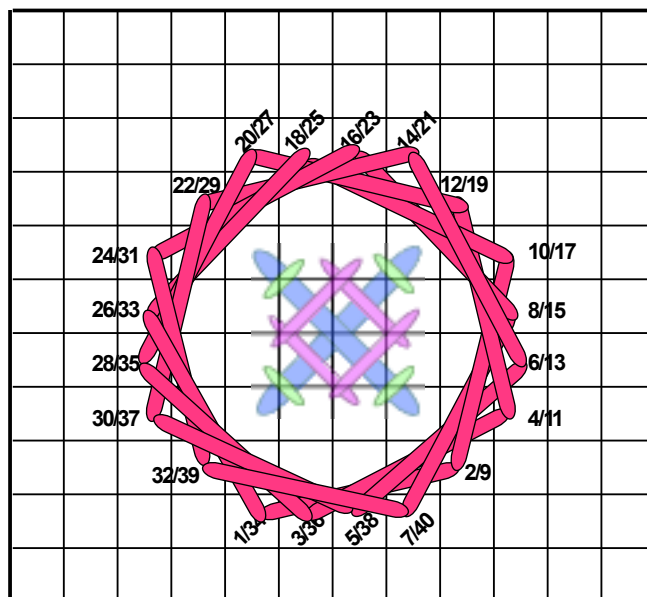


2. Using Thread #5, (_____), stitch the Rice stitch beginning with the cross. Follow the blue lines in the diagram below. Next, using Thread #1, (_____), stitch the green lines crossing over as shown on the diagram below. Lastly, using Thread #2, (_____), stitch the purple lines as shown in the diagram.



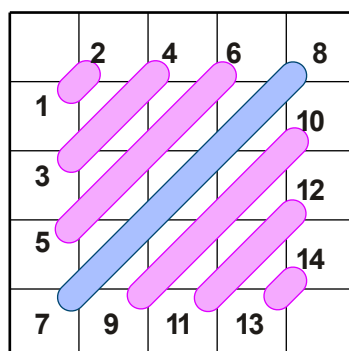
Rice Stitch

3. Stitch the Jessica surrounding the center Rice Stitch. Use Thread #3, (_____), and follow the number sequence in the diagram below.



Jessica

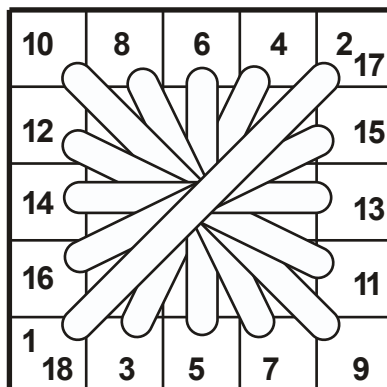
4. Stitch a frame of cushion stitches surrounding the center motif as shown on the Master Chart. Use Thread #4, (_____), for the pink lines and Thread #1, (_____), for the blue lines.



Cushion Stitch

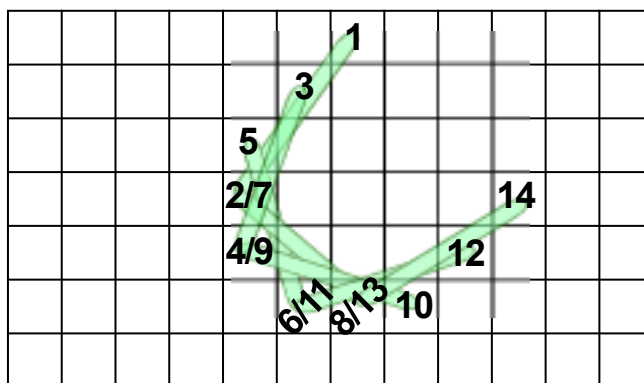
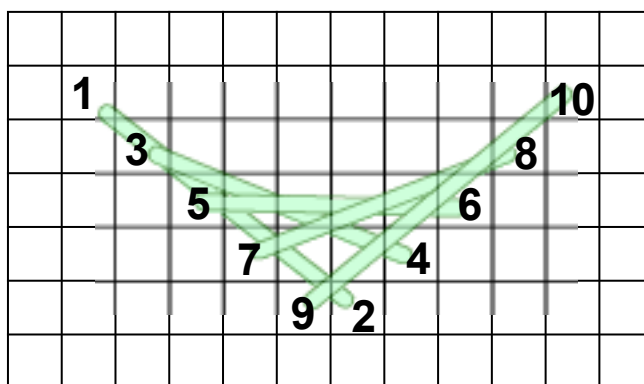
4. Stitch a frame of of gobelin stitches over 1 intersection using Thread #2, (_____), and following the light orange lines on your Master Chart.

5. Stitch the frame of Rhodes stitches as shown on the Master Chart, using Thread #6, (_____). Follow the diagram below for the stitch sequence. Make sure to lay your fibers on both sides of the canvas in order to achieve a clean look.



Rhodes Stitch

5. Move out to the green crescents on the outer border of the design. Using Thread #3, (_____), stitch the sequence of the crescents. Each side of the square is formed by three crescents as shown in the top diagram and each corner of the square is formed by a crescent shown in the bottom diagram.

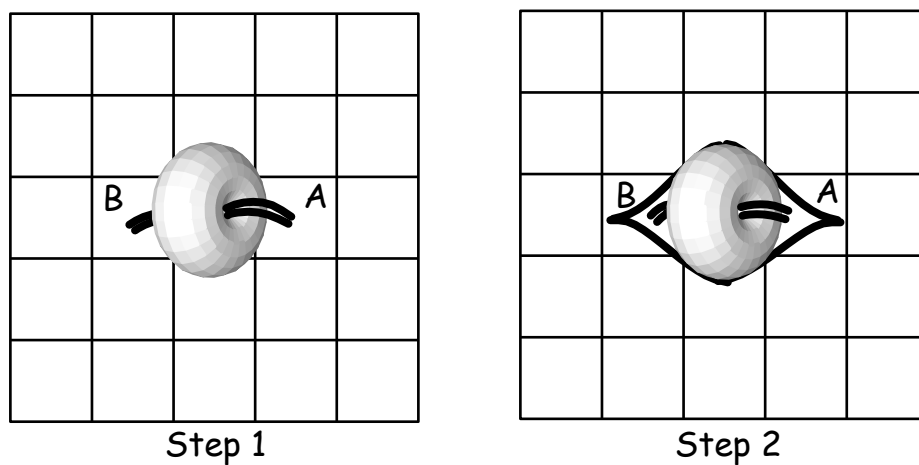


Crescents

5. Fill in the area between the Rhodes stitches and the border you just completed with basketweave stitches. These stitches are marked by pink lines on your Master Chart. Use Thread #5, (_____).

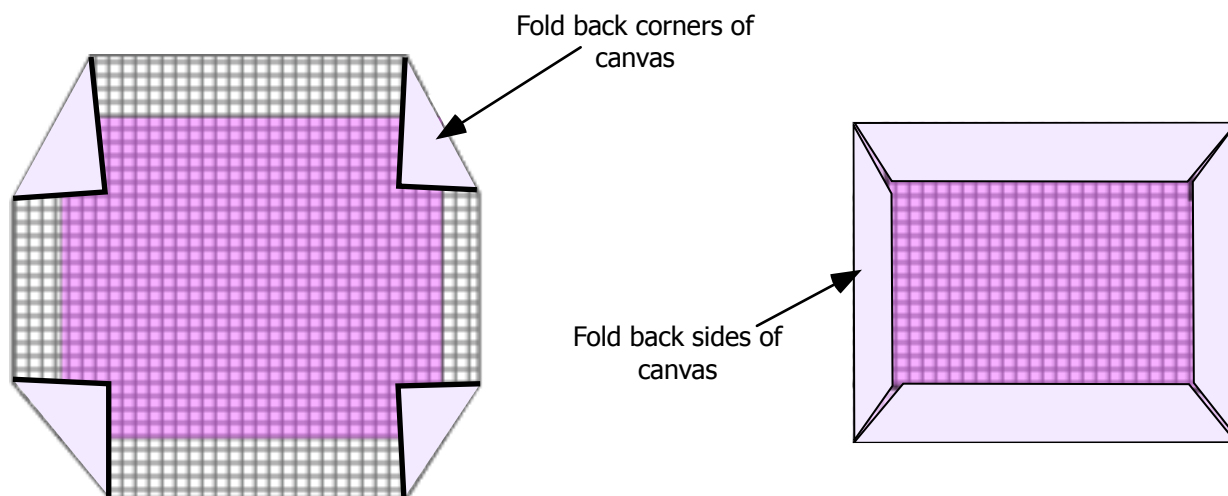
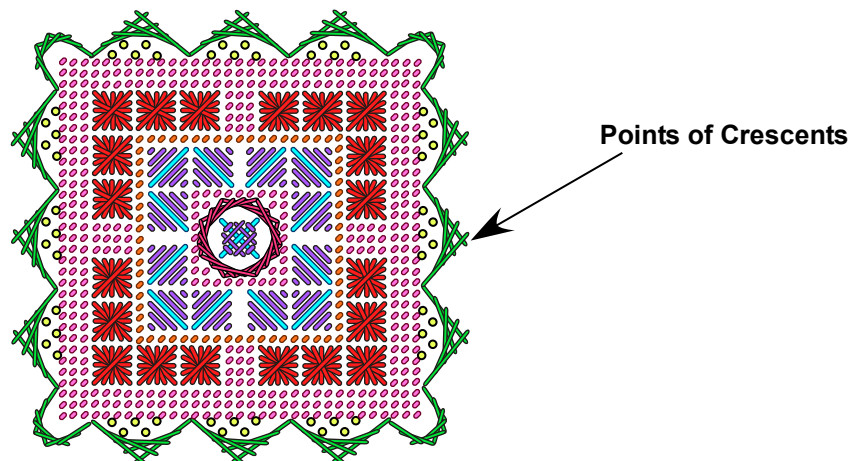
6. Attach the beads to the canvas. Each yellow circle on the Master Chart marks the location of a bead.

Attaching Individual Beads

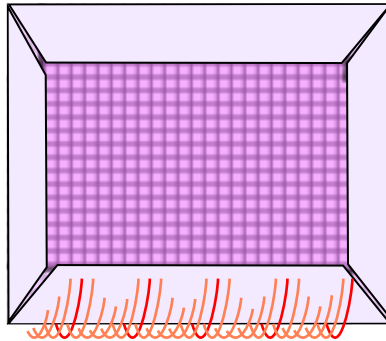


Each small circle on the Master Chart indicates a bead. Follow the Master Chart for the placement of all the beads in your design. How to bead: you may use a beading or sewing needle and thread, or Nymo beading thread. Thread your needle and double the thread, knotting it at the ends. Bring your needle up at A and go through the bead, go down at B. Come up again at A. Split your threads so that a single thread is on each side of the bead. Go down at B again. As the thread comes down, it hugs the bead, causing it to stand straight.

6. Finishing the piece is done while completing the last step of the design. Remove your canvas from the stretcher bars and cut the canvas to 10 threads from the points of the outer crescents. Fold the excess canvas to the back beginning with the corners. You will begin the fold at the corners in a mitered fashion. Then fold all four sides back.



6. Stitch the lines shown on the Master Chart stitching over the edge of the canvas, (whipstitch). The orange lines are done with Thread #2, (_____), and the red lines are done with Thread #3, (_____).



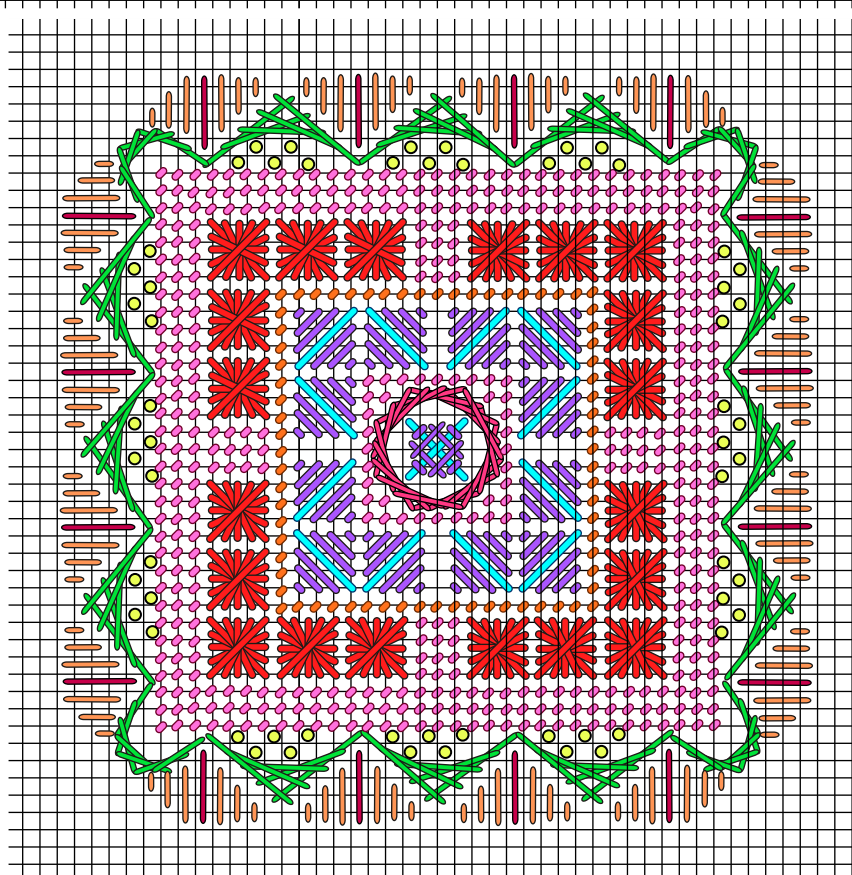
7. Sew a piece of UltraSuede® the size of the finished design to the back of the cuff. (You could use a sewing machine for this part, making sure to use a coordinating sewing thread).

8. I chose to display the design as a diamond, turning the design 45°. Along the bottom two sides I embellished the design with fringe made of beautiful crystals, freshwater pearls, beads and gold-filled wirework. I also added two swags of gold-filled chain at the bottom of the piece.

**** If you are interested in purchasing the items listed for embellishing this piece, (not including the tools), please log onto the Ornaments website, (www.ornadesign.com), in the Shop section. Along with the items you will receive instructions on how to embellish the piece as shown in the photo. You will also find a thread pack for this design if you wish to purchase the threads through our site. ****

TALUL

Master Chart



- Thread #1 Kreinik #12 Braid
 Thread #2 Access Commodities Trebizond TRA 736
 Thread #3 Access Commodities Trebizond TRA 495
 Thread #4 Access Commodities Trebizond TRA 393
 Thread #5 Access Commodities Trebizond TRA 695
 Thread #6 Rainbow Gallery Neon Rays N86
- Mill Hill Beads Magnifica 11002

8 pieces of 4" each
 22 gauge bronze wire

5" of Gold-Filled chain
 of your choice.

8 X 8mm faceted crystal
 beads in Turquoise color

16 x 4mm Czech fire-polish
 round faceted beads in
 Olivine

8 x 5.5x3.5mm button
 freshwater pearls in
 light teal

24 Mill Hill Glass Seed
 Beads #00557

8 gold-colored jump rings

